

Importing Comment Bases from SilhouetteELAR3 into SilhouetteELAR4

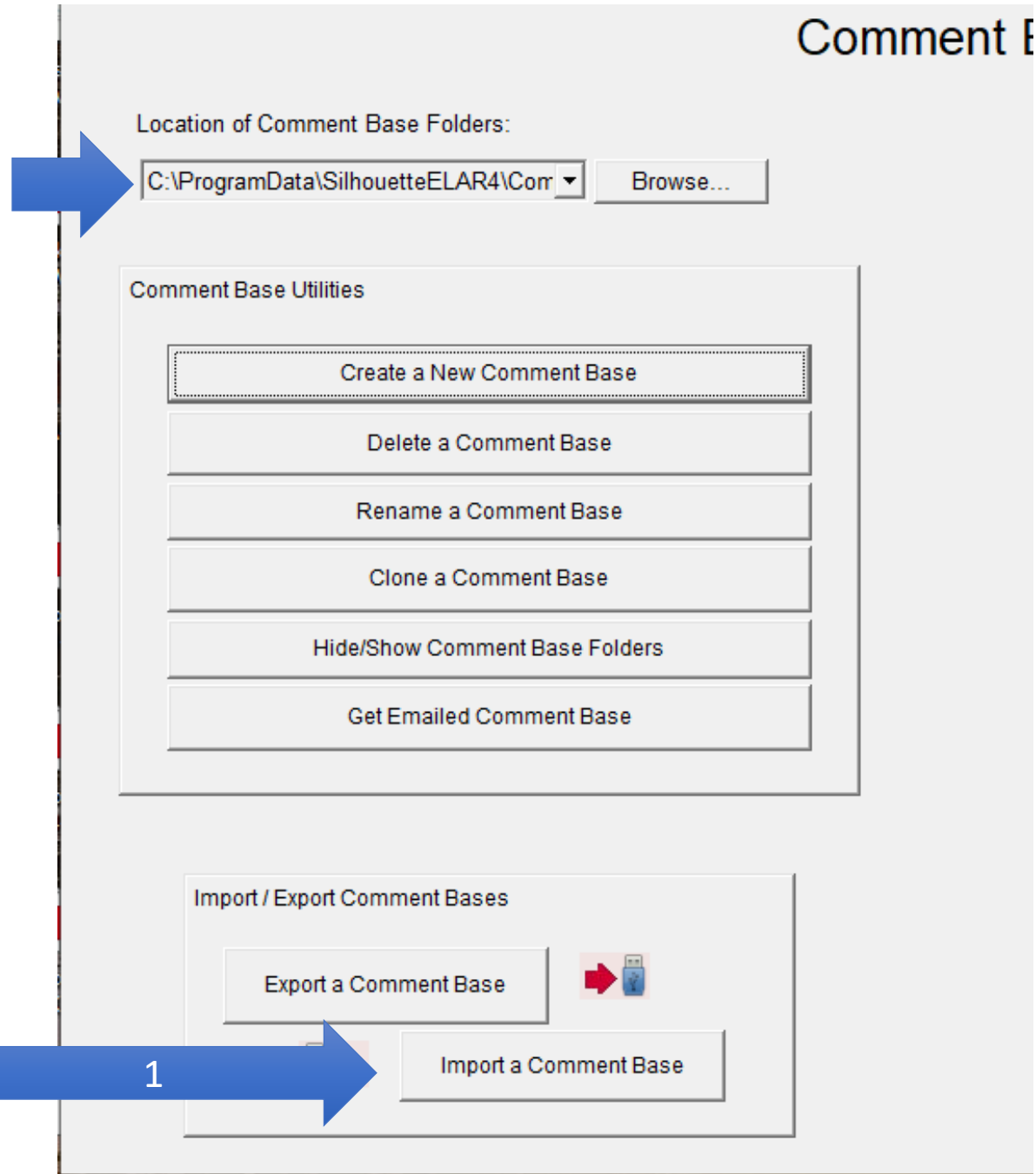
(Windows)

In the Comment Bases window, note the **Location of Comment Base Folders**. If SilhouetteELAR4 is installed on your Windows computer, this location will, by default, be c:\ProgramData\SilhouetteELAR4\Comments.

If SilhouetteELAR3 is installed on that same computer, then its Comment Bases will be found in c:\ProgramData\SilhouetteELAR

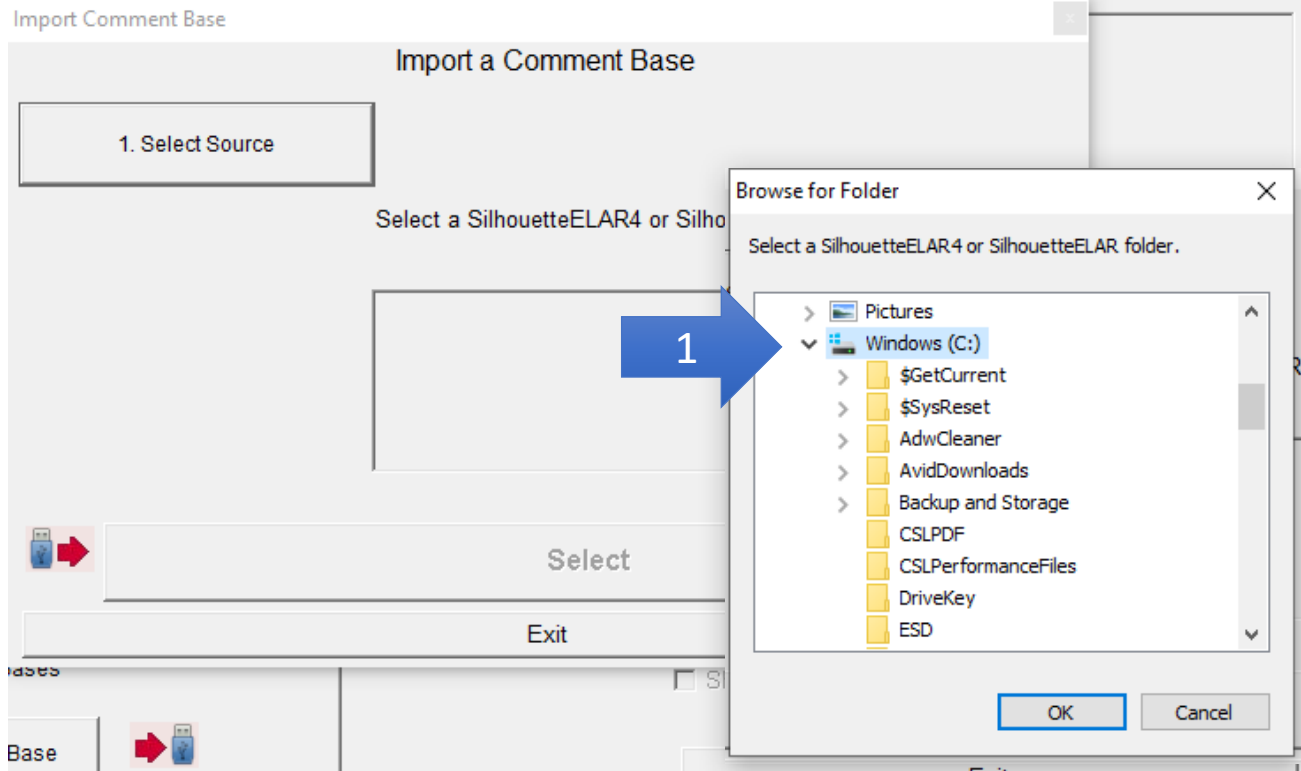
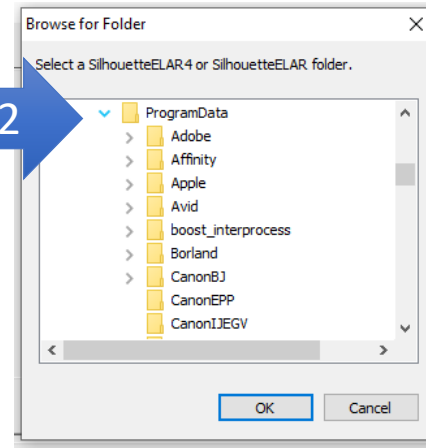
You will use Import a Comment Base in SilhouetteELAR4 to copy over the SilhouetteELAR3 comment bases.

1. In the **SilhouetteELAR4 Comment Bases** window, click on **Import a Comment Base**

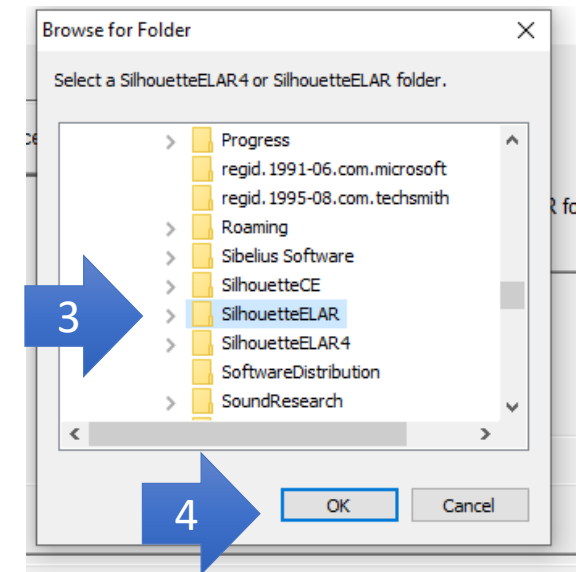


In the Import a Comment Base window, click on **1. Select Source**. This will bring up a **Browse for Folder** window where you will locate the SilhouetteELAR folder. **First**, slide down and open the Windows (C:) list.

Second, slide further down and open the ProgramData list.

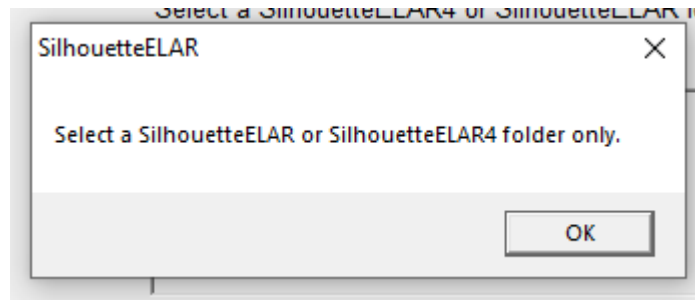


Third, slide further down select (but DO NOT OPEN) the SilhouetteELAR folder (NOT the SilhouetteELAR4 folder).



Fourth, click on OK.

Oops....if you get this message then you have selected the wrong folder OR you have gone *into* the SilhouetteELAR folder. Try again.



If you selected the correct path, then you will see a checklist of the comment bases that you have in SilhouetteELAR3. Next, check the ones you wish to import and click on the **IMPORT** button.

All done!

