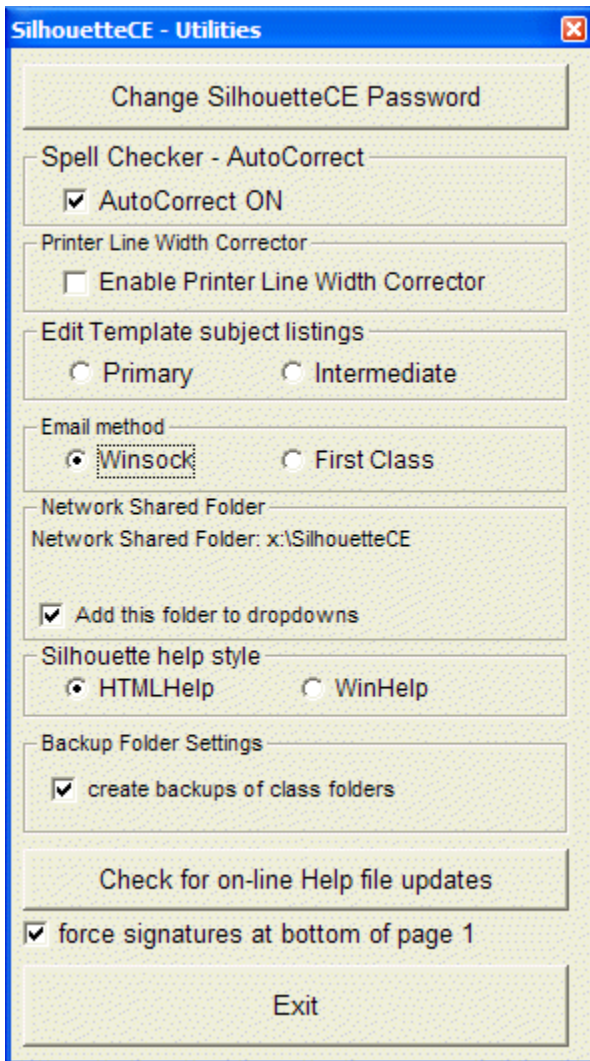


Chapter One: SilhouetteCE Utilities



Silhouette Password

Use this option to create or change a SilhouetteCE general password. To remove a password, click on Accept with no password entered.

Note: SilhouetteCE passwords are case-sensitive. That is, upper case letters are different than lower case letters. ('CAT' is not 'cat'). Only alphanumeric characters may be used in a SilhouetteCE password.

Spell Checker – Autocorrect

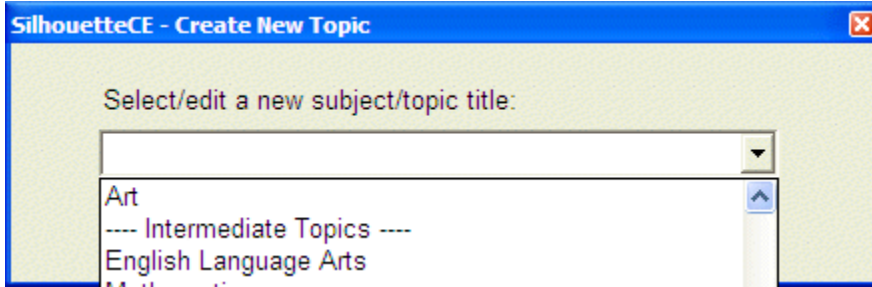
When editing comments in the Comment Base or in the Student Reports as well as in many of the edit windows in Silhouette you may choose to have the spell checker autocorrect mode on or off.

With AutoCorrect ON, the spellchecker will underline words not in its dictionaries, and may suggest alternate spelling. Some find this very useful, but some find it an annoyance, preferring to do a spellcheck after they have finished typing.

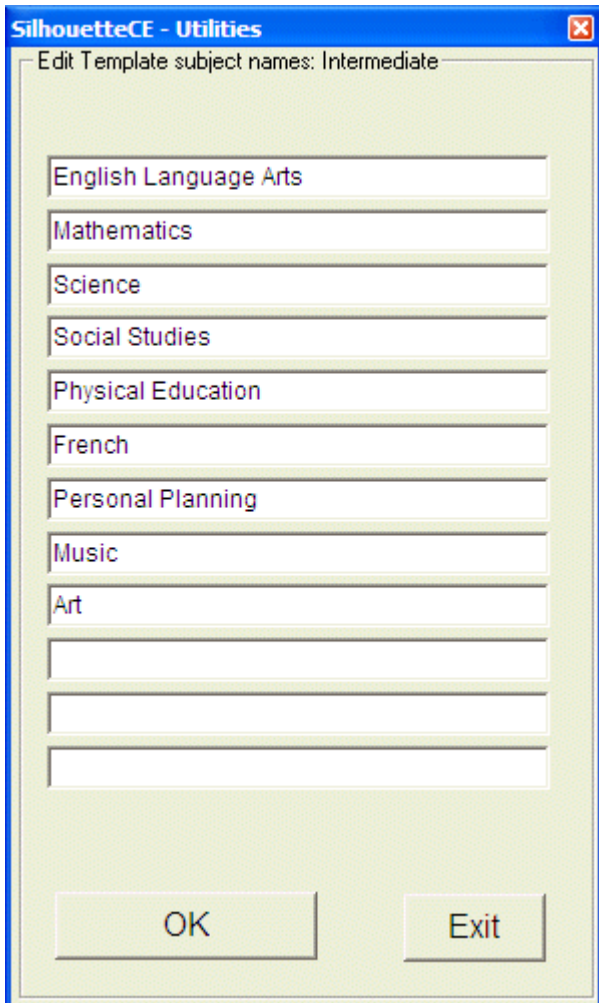
Printer Line Width Corrector

On some printers, the grid lines are printed very faint. If this is the case with your printer, check Enable Printer Line Width Corrector. Note that if this is checked, then when previewing your reports, the grid line will appear and disappear as you zoom in and out of the document. However, the print-out will contain much better-looking grid lines.

Edit template subject listings



In the Comment Base and Student Reports, there are places where you must enter a subject. You can type in the subject or choose one from a dropdown list. In SilhouetteCE Utilities is where you can edit that dropdown list, containing a Primary and an Intermediate section.



Special Network Folder

Add this folder to dropdowns: This is the only network setting that is accessible through SilhouetteCE Utilities. When checked, the Special Network Folder location will appear on the path dropdowns on, for example, the main Comment Base window and the Student Reports window. While most teachers may not use this feature, a secretary who is printing reports, or an administrator who is reviewing reports may find it very useful.

Email Method

Use the default Winsock method unless you are using First Class software to manage your email.

Silhouette Help Style

Select between the WinHelp or HTMLHelp. The content is the same, but the HTMLHelp look is more up-to-date. However, because of Windows security problems HTMLHelp will not work if run from a network drive.

Backup Folder Settings

When backups are enabled, every time you exit a class folder or a student file on the Student Reports screen, the class folder is copied, compressed and stored in the SCEBU folder in your SilhouetteResource folder. (Note: Backups will NOT be created if you are working on a floppy disk - the delay would be too much because of long write times to floppy disks.)

You manage the backup files through the Folders Utilities button on the Student Reports screen.

Check for On-Line Help file Update

If you are connected to the internet, SilhouetteCE will check on the Duet Software site for an updated version of the help file that you are using (either HTMLHelp (recommended) or WinHelp). If there is a newer version available, you may choose to download and install it. No restart of SilhouetteCE will be required.

Force signatures at bottom of page 1

If a student's report must continue onto a second page, this option is provided to declare that regardless of the number of pages, the teacher and administrator signature lines will be placed at the bottom of the first page. If unchecked, the signature will appear at the end of the text of the student report.