

How to Copy folders from the old SilhouetteELAR into SilhouetteELAR 3

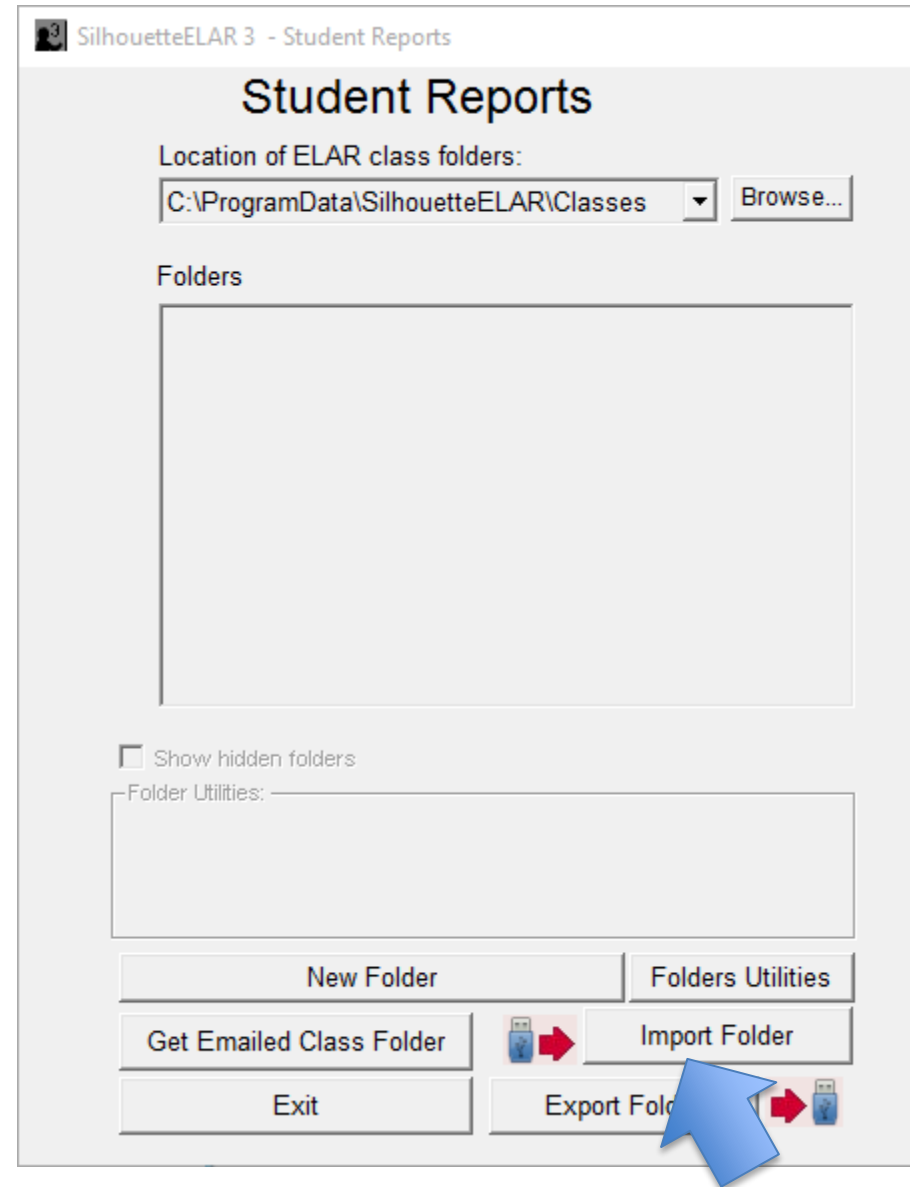
(Windows and MacOS)

Note: The screenshots in this tutorial are from the Windows version but most of the material applies to the MacOS version as well.

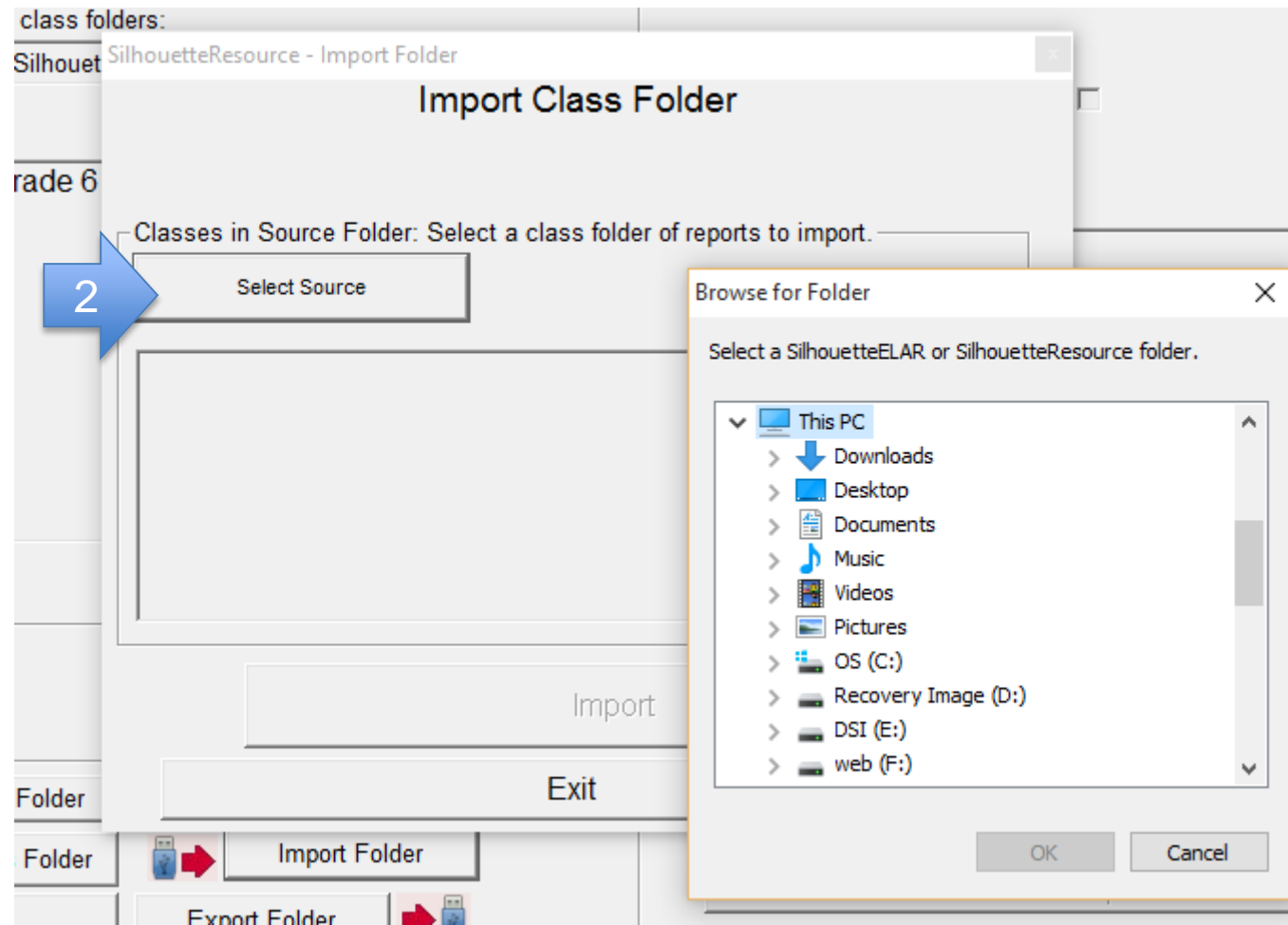
Notes:

- Previous versions of SilhouetteELAR were located in a SilhouetteResource folder, whereas SilhouetteELAR 3 is stored in a SilhouetteELAR folder.
- When SilhouetteELAR 3 imports folders created with a previous version, it will NOT import AIP or ELL Log files.

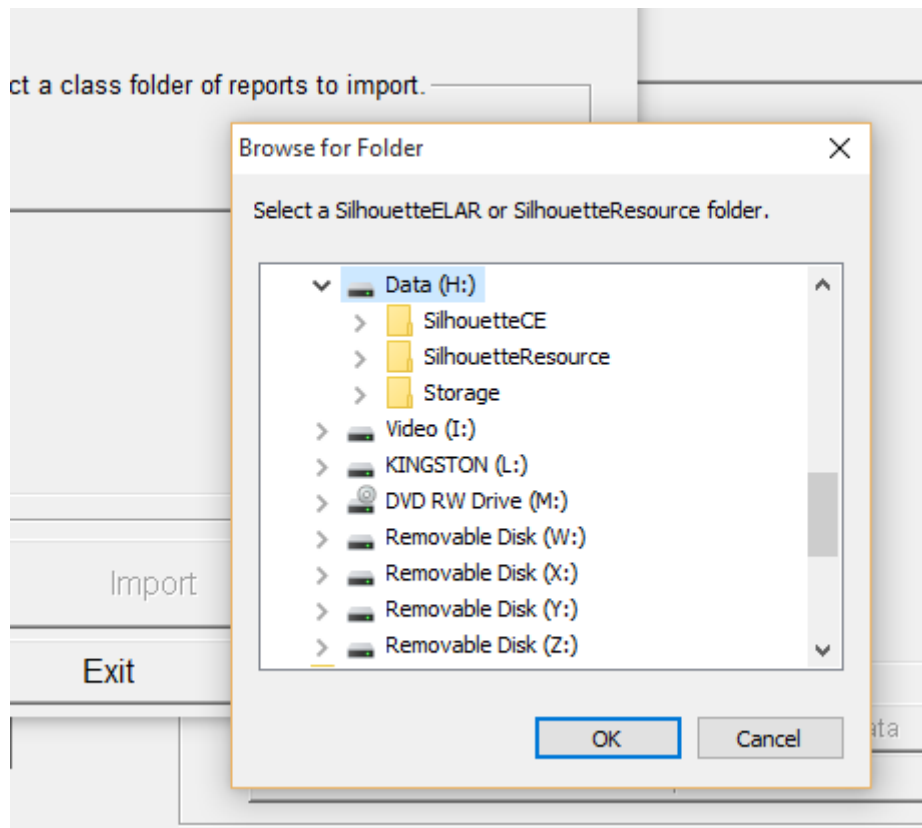
1. On the student reports window, click **Import Folder**.



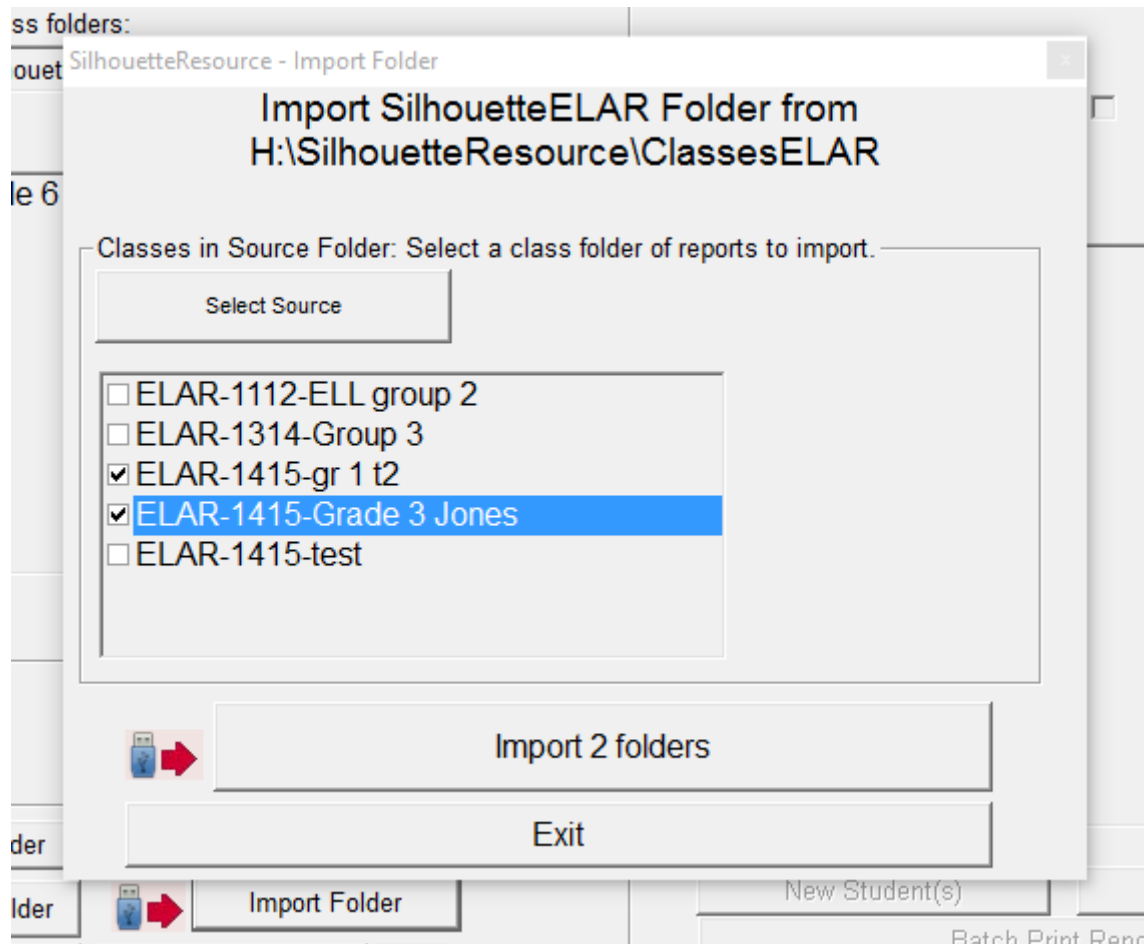
2. Click on **Select Source**.
3. In the Browse for Folder dialog, the instructions are to **Select a SilhouetteELAR or SilhouetteResource folder** (Windows version) or **Select a SilhouetteELAR folder** (MacOS version – but, regardless, selecting a SilhouetteResource in the MacOS version will still work). In this case you will be selecting a SilhouetteResource folder. Depending on your configuration, this SilhouetteResource folder may be located:
 - on your h:/ drive if you are working on your school server account (Windows only)
 - in your c:/Program Files folder if you have the older SilhouetteELAR installed on your own computer (Windows only)
 - on a USB stick if you have exported your files there (this is the only circumstance where the procedure will for with either the Windows or MacOS version of SilhouetteELAR 3



4. In this example, the SilhouetteResource folder is located on my h:/ drive. Click on the SilhouetteResource folder and then click on **OK**. The correct ELAR folder inside the SilhouetteResource folder will automatically be located and you will be presented with a list of the ELAR folders contained there (see next slide).



5. Check the folders of files that you want to copy into SilhouetteELAR 3 and click on the **Import folders** button.



6. In this example, the two 1415 folders from the SilhouetteResource folder have been copied into SilhouetteELAR 3.

SilhouetteELAR 3 - Student Reports

Student Reports

Location of ELAR class folders:
C:\ProgramData\SilhouetteELAR\Classes

Folder: ELAR-1415-Grade 3 Jones\Term1

- ELAR-1415-gr 1 t2
- ELAR-1415-Grade 3 Jones**
- ELAR-1516-grade 6 and 7 group

Show hidden folders

Folder Utilities: ELAR-1415-Grade 3 Jones\Term1

15 student files: ELAR-1415-Grade 3 Jones\Term1

ELAR Report Files

Sort by: Surnames and by Grades
 First Names

Term 1 Term 2 Term 3

- Amos, John 28 Nov 2014
- Amos, John 28 Nov 2014
- Amos, John 28 Nov 2014
- Amos, John 28 Nov 2014
- Amos, John 28 Nov 2014
- Amos, John 28 Nov 2014
- Amos, John 28 Nov 2014
- Amos, John 28 Nov 2014
- Amos, John 28 Nov 2014
- Amos, John 28 Nov 2014
- Amos, John 28 Nov 2014
- Amos, John 28 Nov 2014
- Amos, John 28 Nov 2014
- Amos, John 28 Nov 2014
- Amos, John 28 Nov 2014