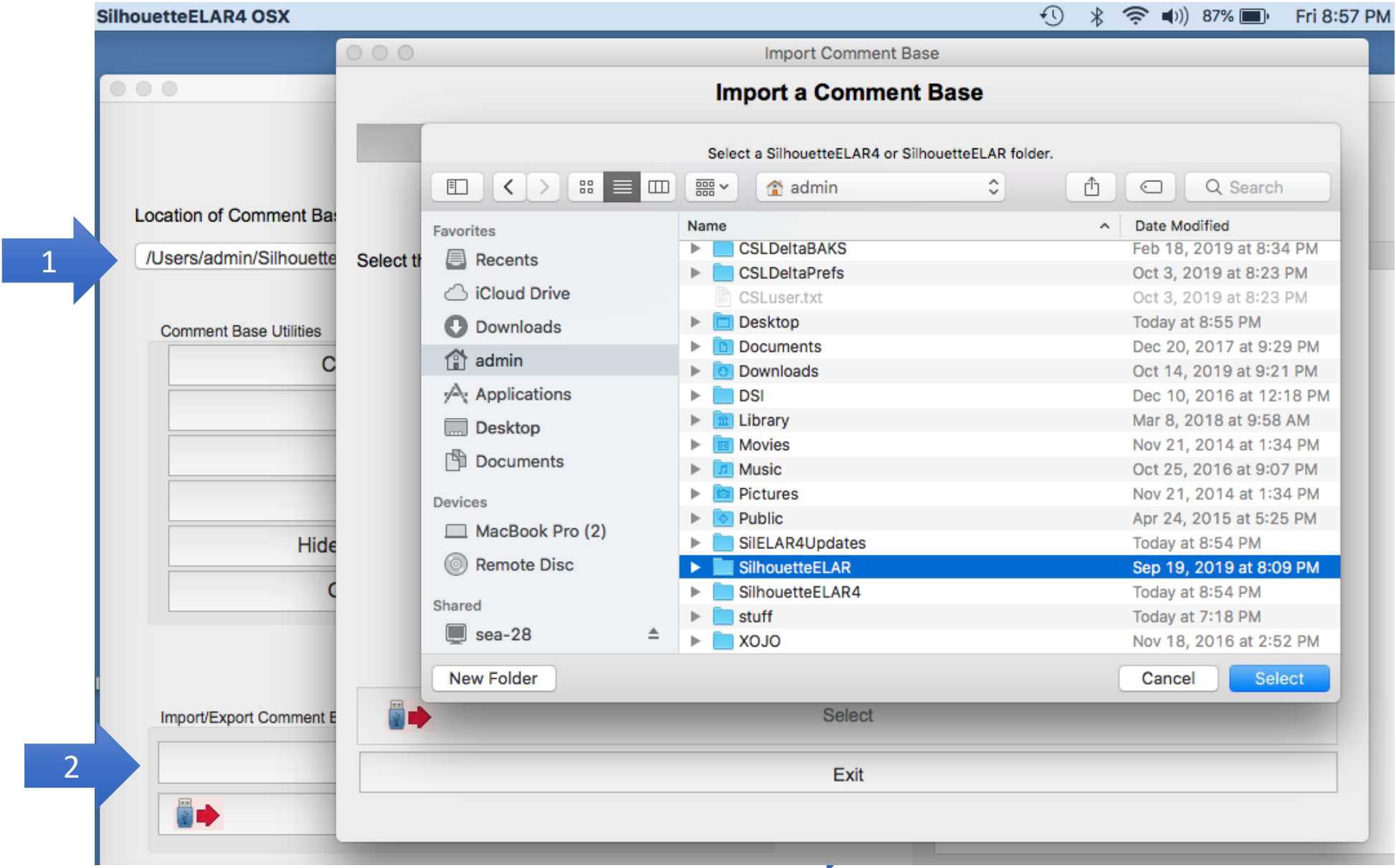


Importing a Comment Base from SilhouetteELAR3 into SilhouetteELAR4

(MacOS)

1. In the **Comment Bases** window, note the **Location of Comment Base Folders** is /Users/admin/SilhouetteELAR4

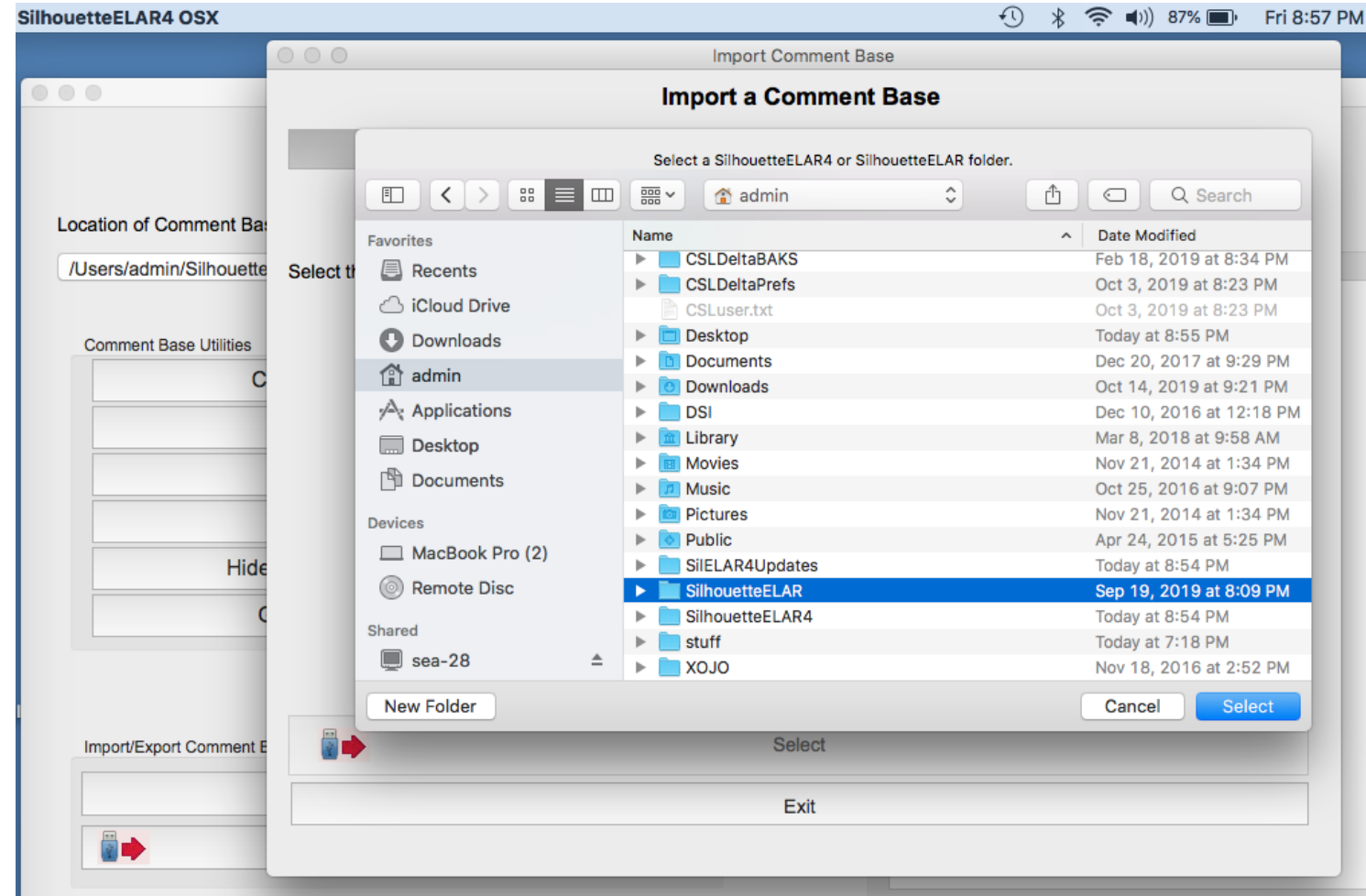


2. In the SilhouetteELAR4 Comment Bases window, click on **Import a Comment Base**

In the **Import a Comment Base** window, click on **Select Source**. This will bring up a new window where you will locate the SilhouetteELAR folder (this is where SilhouetteELAR3 is located).

As in the example, select **admin** and then the **SilhouetteELAR** folder (but DO NOT ENTER the SilhouetteELAR folder).

Then click on the **Select** button.



The **Import a Comment Base** window will display the comment bases available to import. Select one and then click on the **Import** button.

(Note: On the MacOS version of SilhouetteELAR4 you can import only one comment base at a time.)

